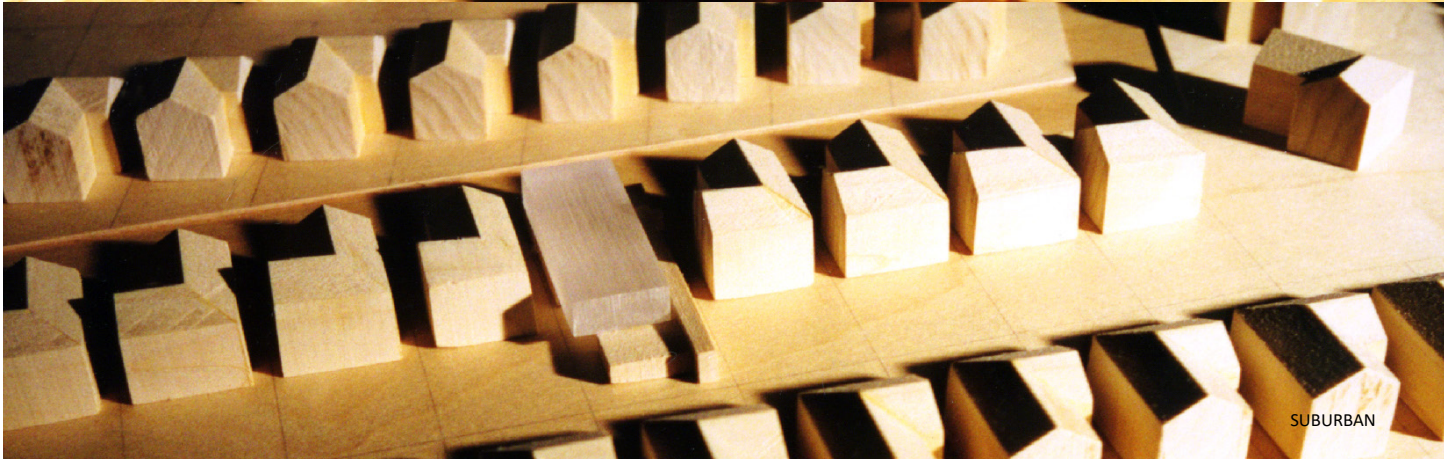
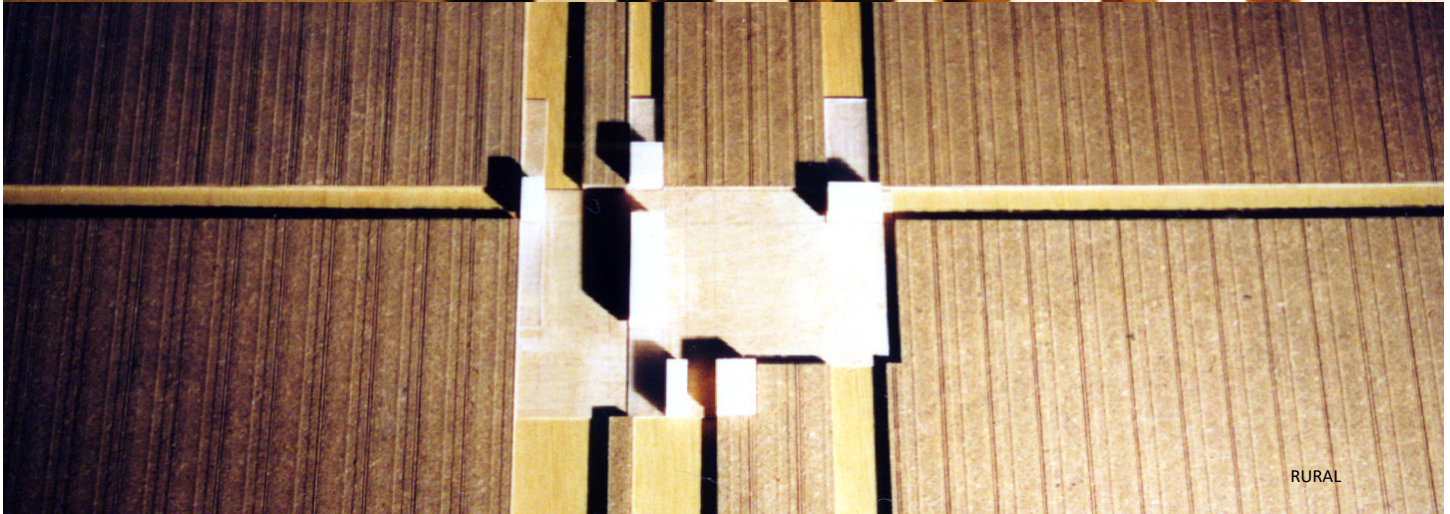


URBAN



SUBURBAN



RURAL

PROJECT

ANYWHERE HOUSE

TYPE

NEW CONSTRUCTION

LOCATION

URBAN - ATLANTA, GA
SUBURBAN - HOUSTON, TX
RURAL - FLUVANNA, VA

DATE

2000

The dissection of the existing house typology provides an image of the essential components. The organs of the body are removed, altered and returned with their new demands and juxtapositions. The result is both the system and the product. The anywhere house has been revealed. The guest room detaches itself from the interior of the house permitting an expansion of its inhabitation. The body of the private is liberated from its invasion. The unit develops as an independent entity. Plugged into the facade through the public face of the constructed dwelling the guest pavilion allows a convenience of both resident and visitor alike. The visitor as an instigator to the cyclical repetition of daily life becomes a jeweled object of display and representation. The grit of sand forms a pearl. The image of the television merges with the icons of the commercially demanded representation. Images screens, float across the dwelling merging the exterior face with the interior inhabitation while balancing the edge of the projected reality with the dwelling confines. The image represents the communality of mass culture infused in the house through its planar presence. Images, both planned and unplanned, infect the daily dealings of place.

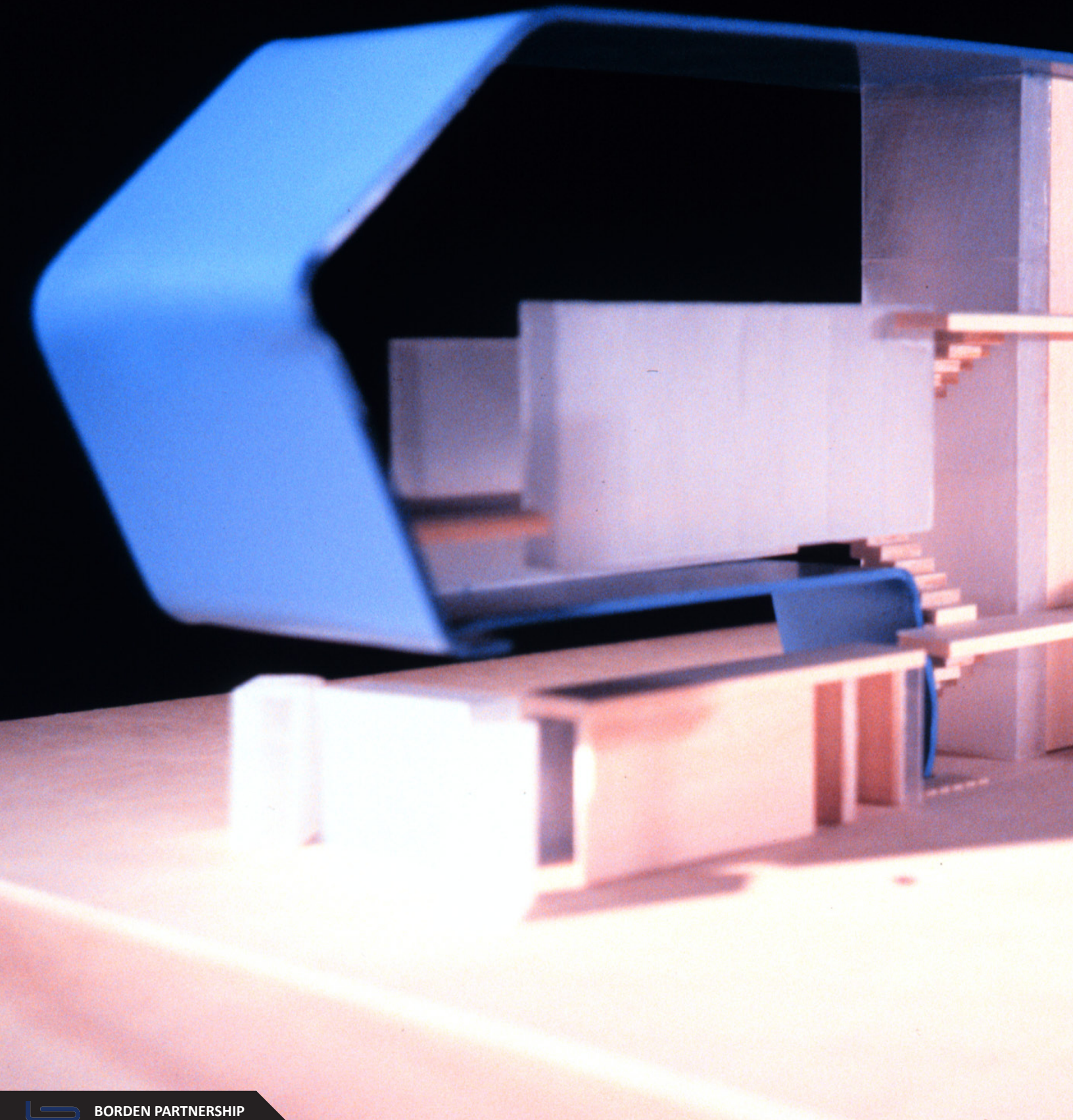


BORDEN PARTNERSHIP

1918 LAUDERDALE STREET
HOUSTON, TEXAS 77030

www.bordenpartnership.com

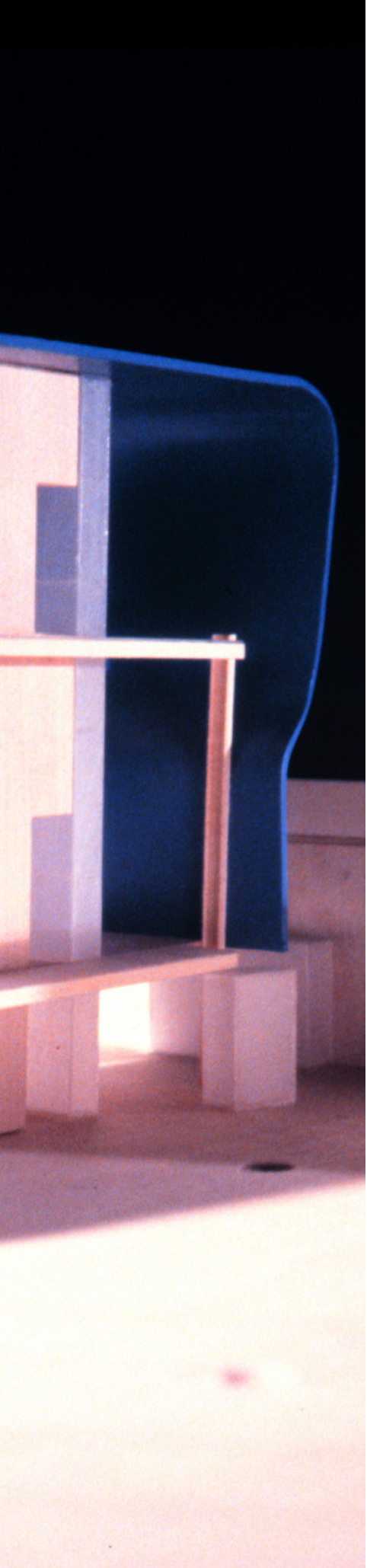
PROJECT
ANYWHERE HOUSE



BORDEN PARTNERSHIP

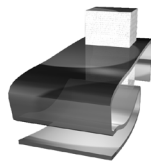
1918 LAUDERDALE STREET
HOUSTON, TEXAS 77030

www.bordenpartnership.com



urban anywhere house

Atlanta, Georgia



The urban site operates on the three dimensional enclosure of the urban boundary. The interior program deflects the continuous surface of enclosure. The interior is organized programmatically in distinct trays. A central core defines the service bar in the vertical. The space of living is defined by occupation.

Based upon the free plan the articulated surface of the house assists in the definition of living space. Change in texture, regardless of interior-exterior condition, presents juxtapositions of location and organization to define the interior planning of the house. The surface, combined with the suspended plates, define areas of presence amidst the undulating surface of the perimeter shell.

The internalized storage condition of the traditional closet is removed from the bowels of the house and smeared along its facade. The articulation of the accumulated objects of cultural production reflect the uniqueness of the inhabitant's identity. The resulting storage-display becomes the patchwork image of the resident's personality.

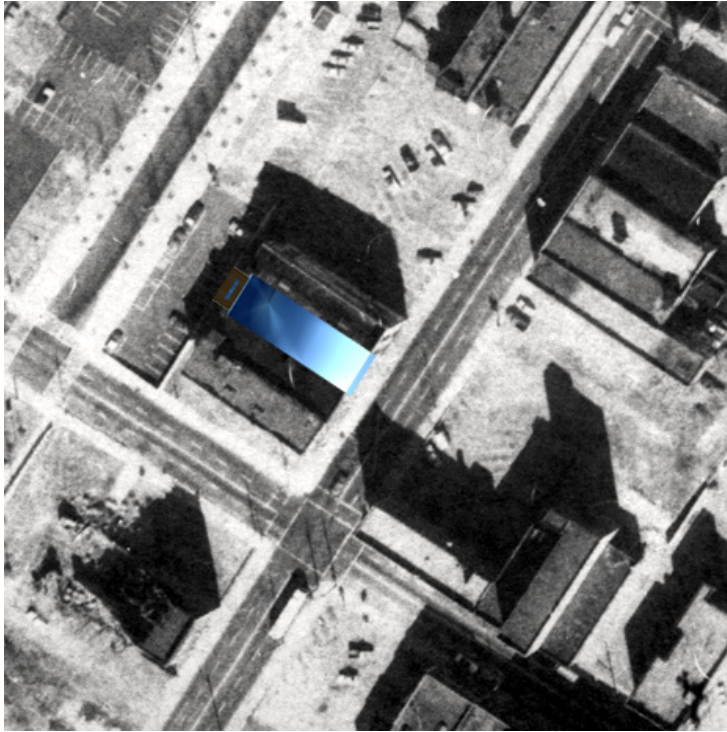
URBAN ANYWHERE HOUSE

BORDEN PARTNERSHIP

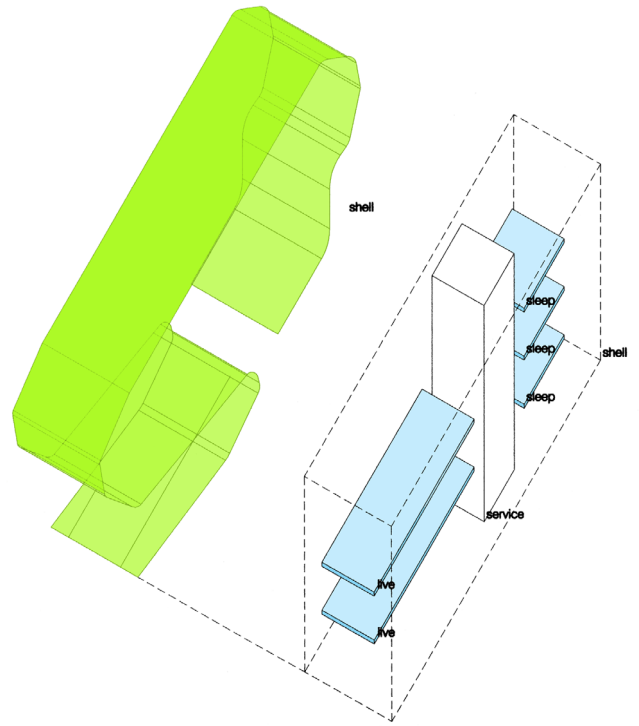
1918 LAUDERDALE STREET
HOUSTON, TEXAS 77030



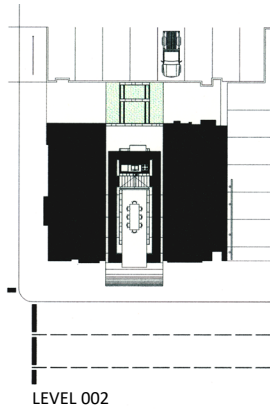
ANYWHERE HOUSE



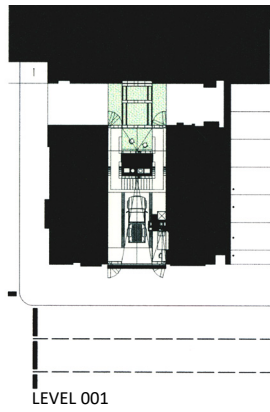
SITE: PEACHTREE STREET



OUTER SURFACE FOLD + INNER PROGRAM TREYS

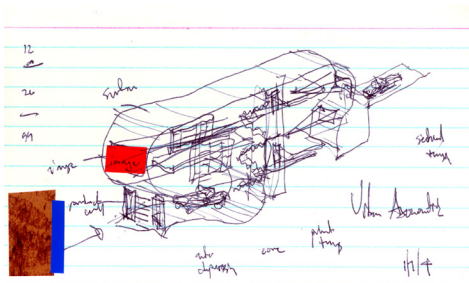


LEVEL 002

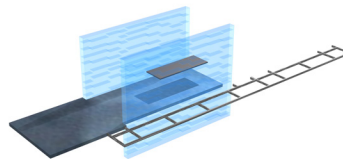


LEVEL 001

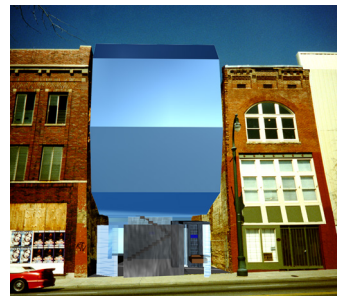
OUTER INFORMATION SURFACE

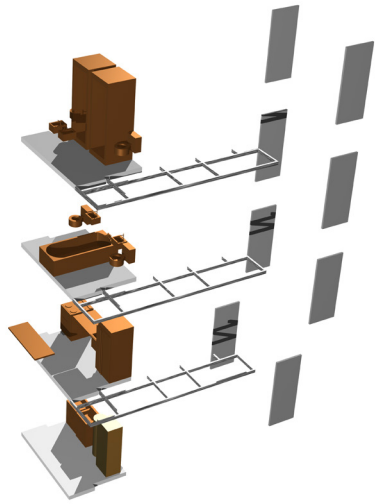
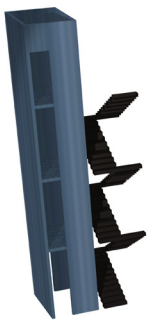


LIVING TREY

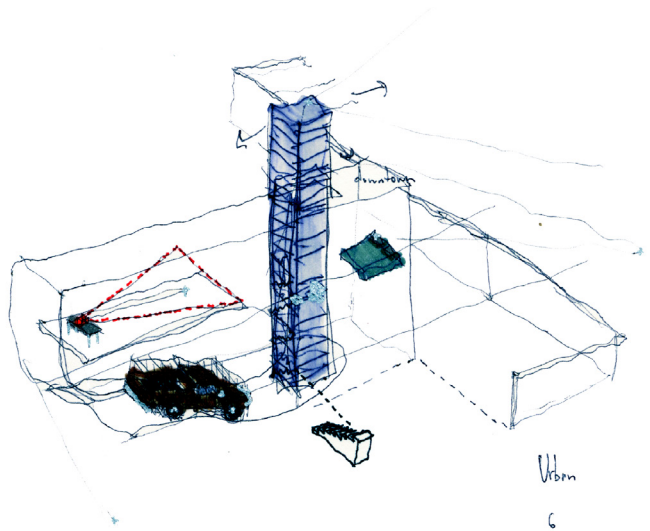


VIEW FROM STREET





PRIMARY CIRCULATION CORE AND REAR PRIVATE TREYS

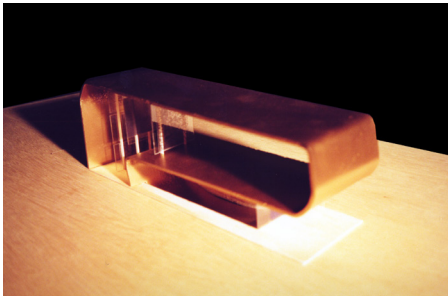


plane of enclosure
 plane of habitation
 elements of existence

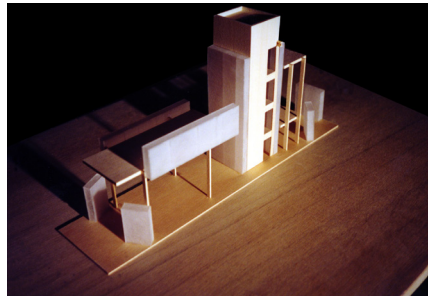
Urban
 6
 —
 5
 —
 11

PROGRAMMATIC DEFLECTION OF FORM

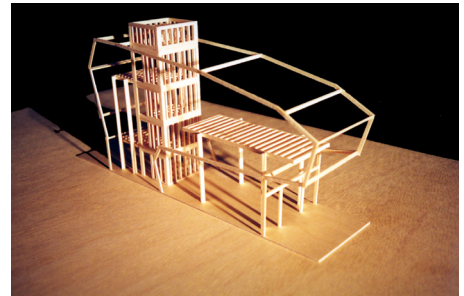
SURFACE + IMAGE



SERVICE + STORAGE



FRAMING

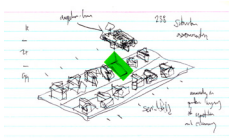




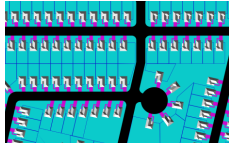


suburban anywhere house

Sablechase
Houston, Texas



The suburban expands to encompass the boundaries of the serial site. A linear service bar defines a edge along which the activities of the house occur. An elevated sleeping bar hovers on a second level. The perimeter is enclosed by a series of operable screens opening and closing the site and the house. The public functions line the crenulated front facade and the commercial back. Living happens across the insertions.



The introduction of the commercial production of the workplace into the confines of the residential dwelling shifts the flow of product movement. The house absorbs a greater flux than the automobile's trunk capacity. Product moving along the existing infrastructure of UPS and FedEx flows through a holding airlock: the commercial windpipe of the residence's presence.

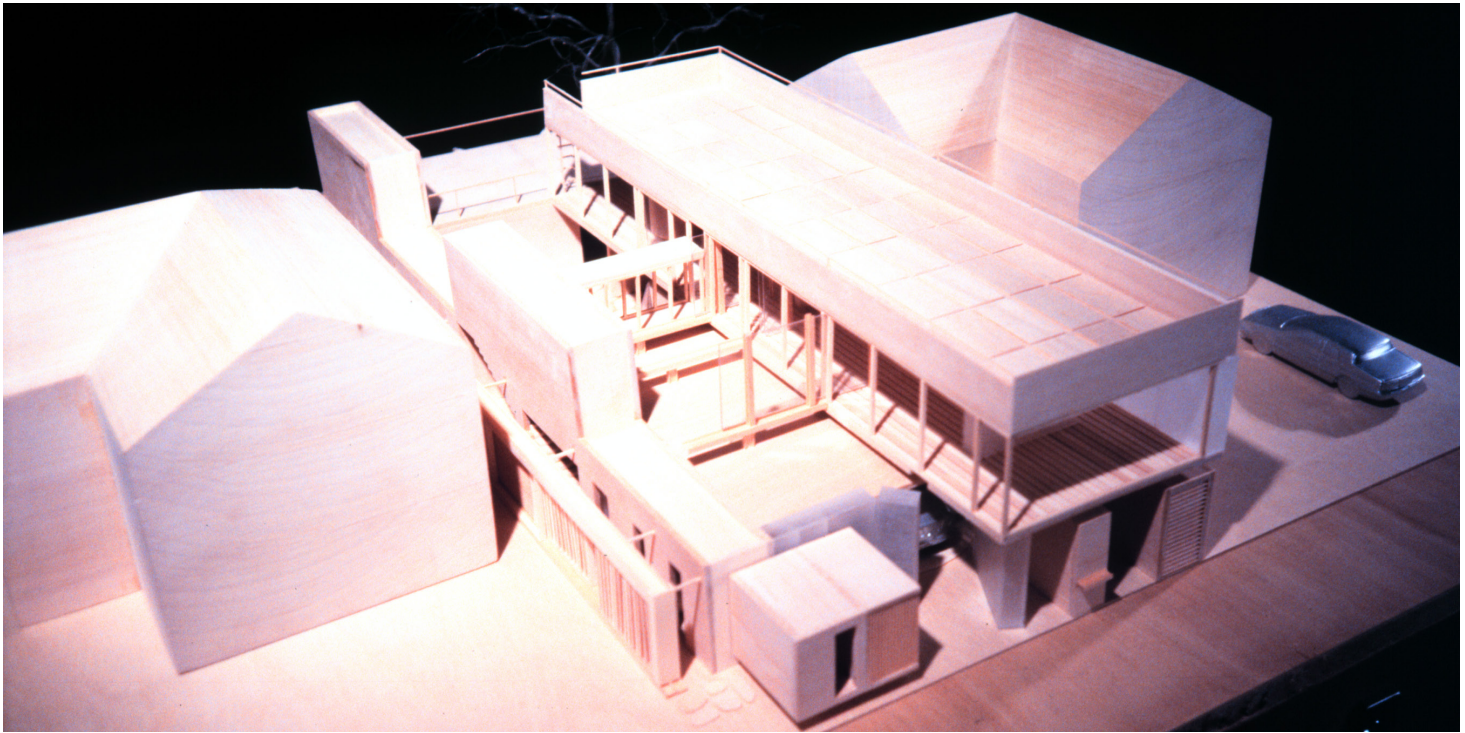
The service functions of the body reflect their presence in the house through a functional ganging. The elements congeal to form cores within which efficiency defines proportion. The body's demands are serviced to allow the mind's freedom to bounce along its edge. The resulting bars organizes the resulting peripheral space of each pavilion.

subu
1
2
3
4
5
6
7
8
9
10
11
12

SUBURBAN ANYWHERE HOUSE



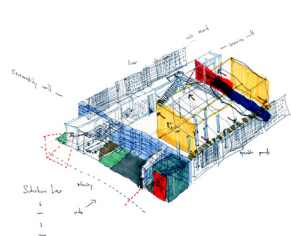
PROJECT
ANYWHERE HOUSE



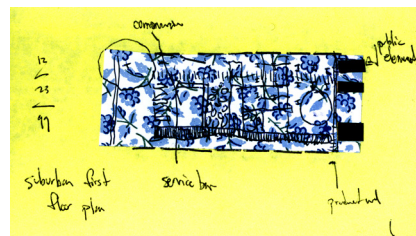
VIEW FROM STREET



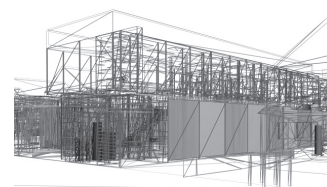
ENTRY ELEMENTS



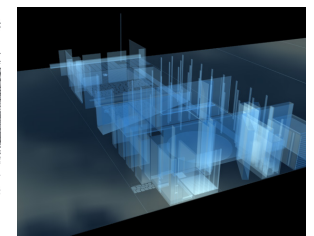
SITE: PROGRAMMATIC ZONES

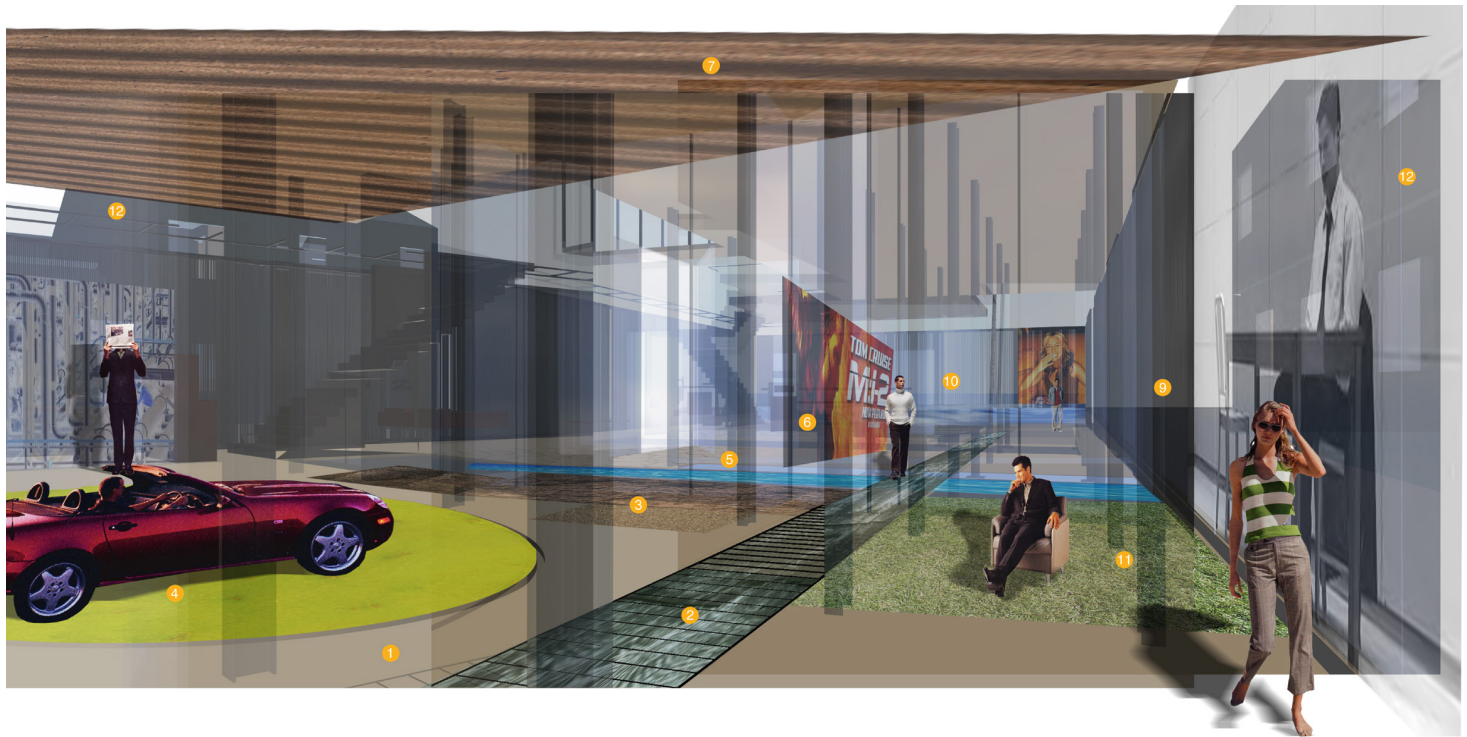


WIREFRAME



MUTABLE ELEMENTS

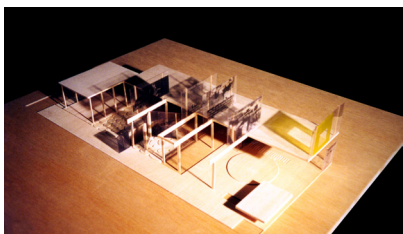




- suburban anywhere house
- 1 live
 - 2 entry spine
 - 3 articulated surface
 - 4 auto table
 - 5 exercise
 - 6 image screen
 - 7 sleeping box
 - 8 service bar
 - 9 operable boundary
 - 10 work
 - 11 interior/exterior
 - 12 existing

VIEW ACROSS LIVING FIELD

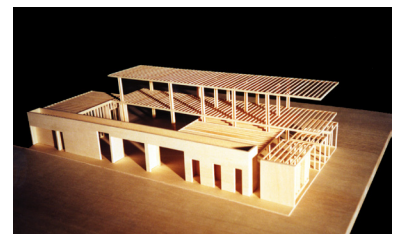
SURFACE + IMAGE



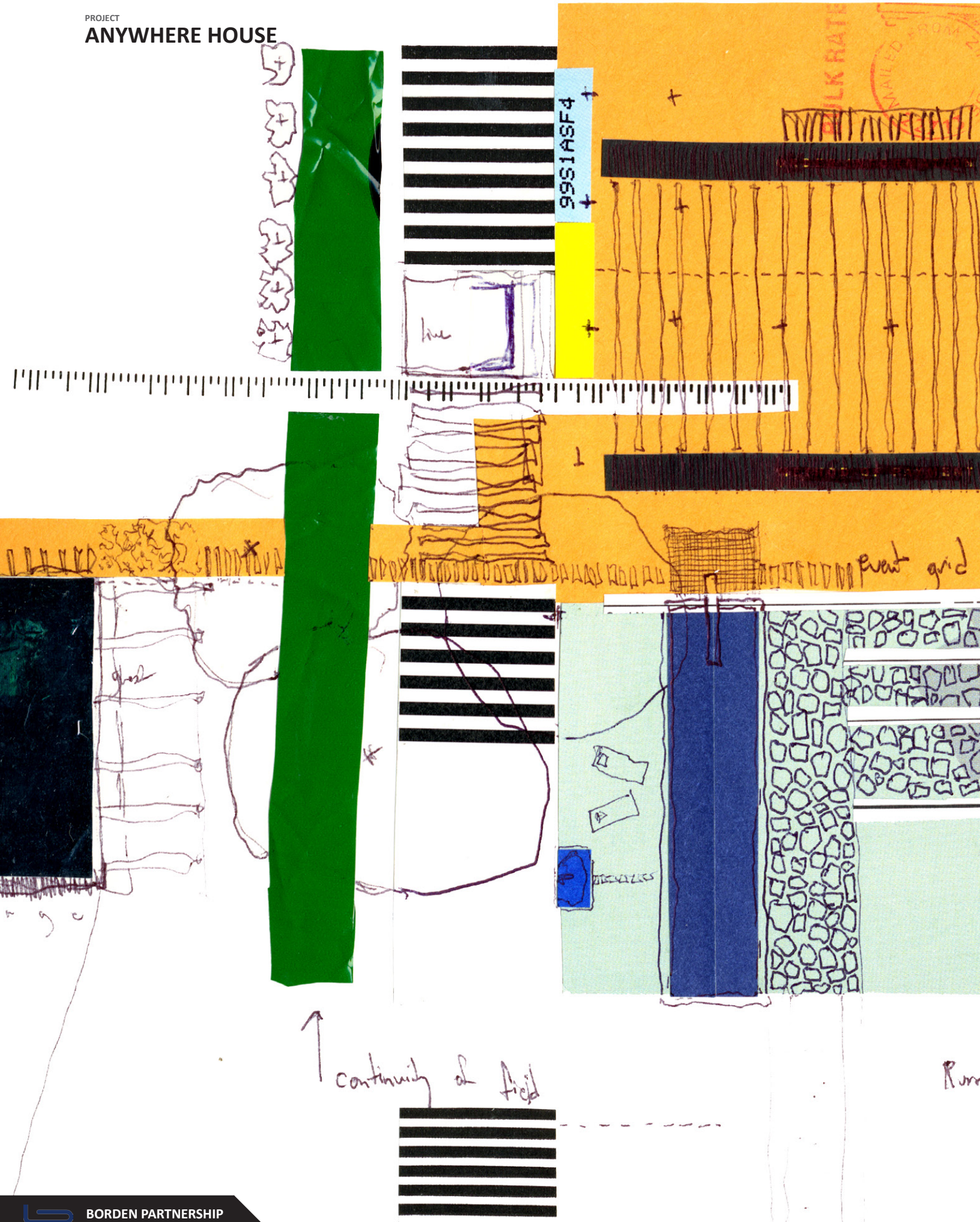
SERVICE + STORAGE



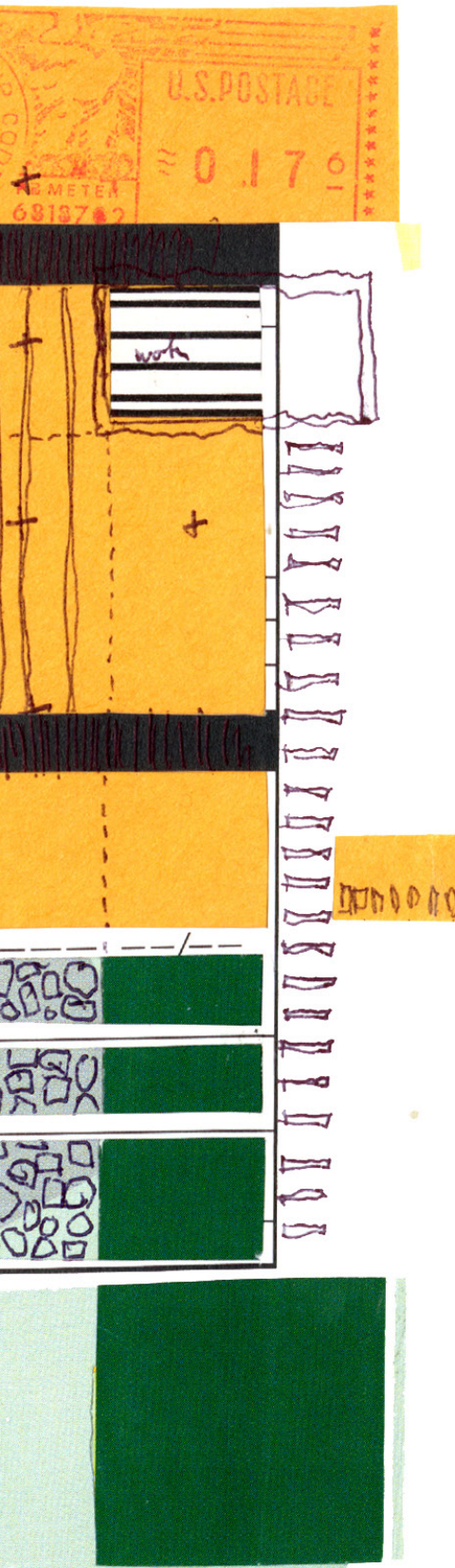
FRAMING



PROJECT
ANYWHERE HOUSE

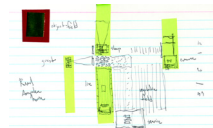


↑ continuity of field



rural anywhere house

Fluvanna, Virginia



The rural inserts itself into the field of production. Emerging from the horizontal modular of the combine, the house distinctly articulates the individual programmatic components: service, live, sleep, guest, work. The result is a living field. Carving itself into the landscape the rural house rides an edge between the natural and the cultivated.

Image screens re-present the projected icon of the television screen by integrating it into the spatial definition of the anywhere house architecture. The undulating information surface establishes compositional juxtapositions and intellectual exposure. The artificial and documented world of exposed cellulose collapse reality and time as distant images infiltrate the most intimate of places. The superimposition of life upon document creates a third condition revelatory in its presentation. The image screen reattaches daily activity to the happenings of society and the majesty of our natural condition. The boundary of the anywhere house remains undefined.

The three houses: rural, suburban and urban that manifest the aforementioned principles. The result is a new typology: a personal domesticity celebrating the inevitabilities of contemporary living.

rural House

1
-
f
-

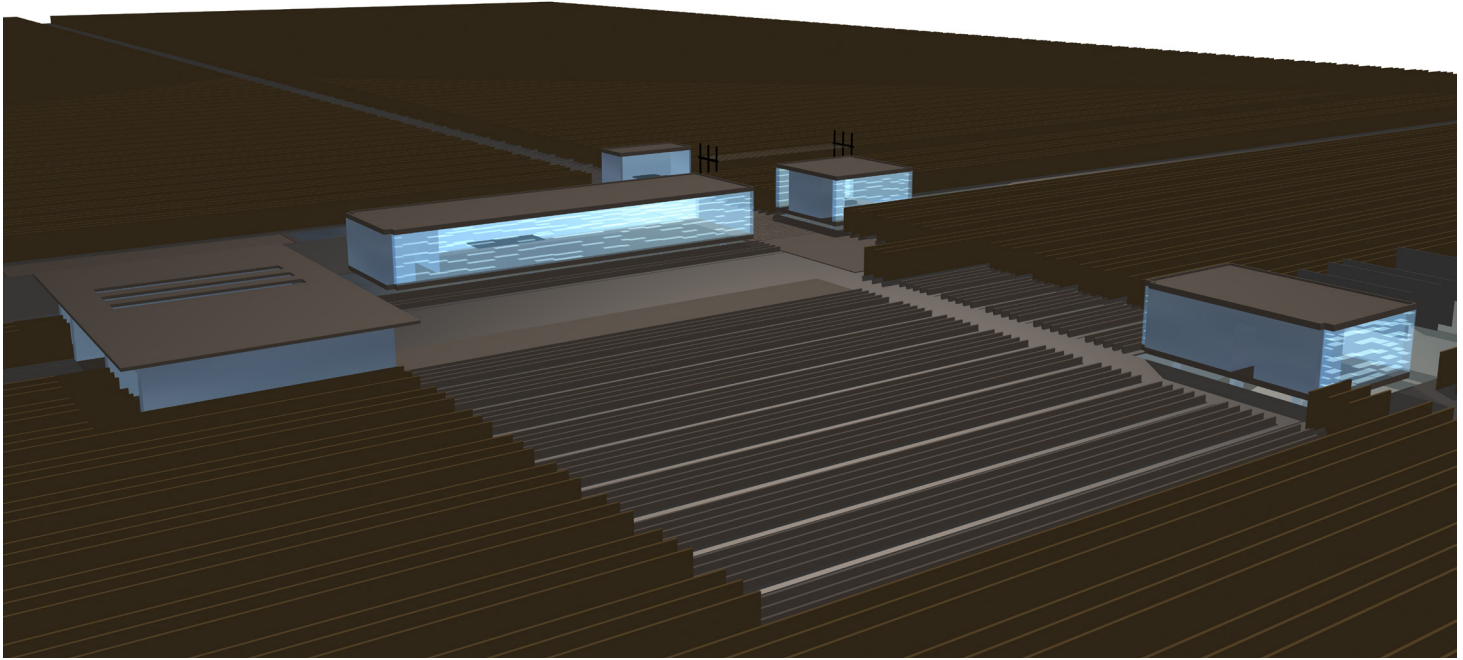
RURAL ANYWHERE HOUSE

BORDEN PARTNERSHIP

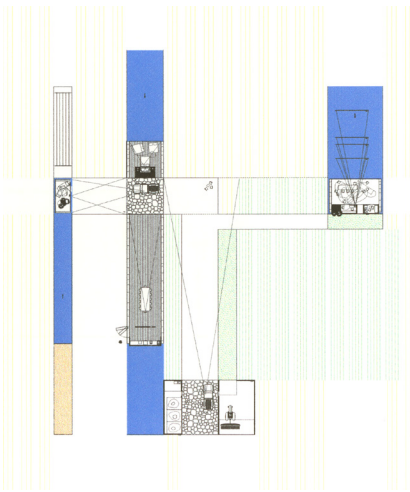
1918 LAUDERDALE STREET
HOUSTON, TEXAS 77030



PROJECT
ANYWHERE HOUSE

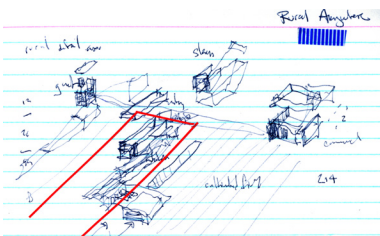


RURAL ANYWHERE: HOUSE AS FIELD

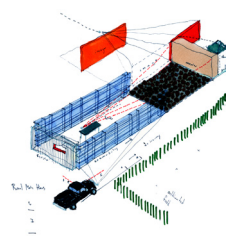


ARRAY FIELD

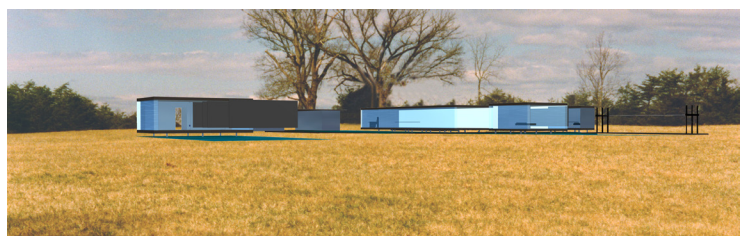
VEHICULAR LOOP

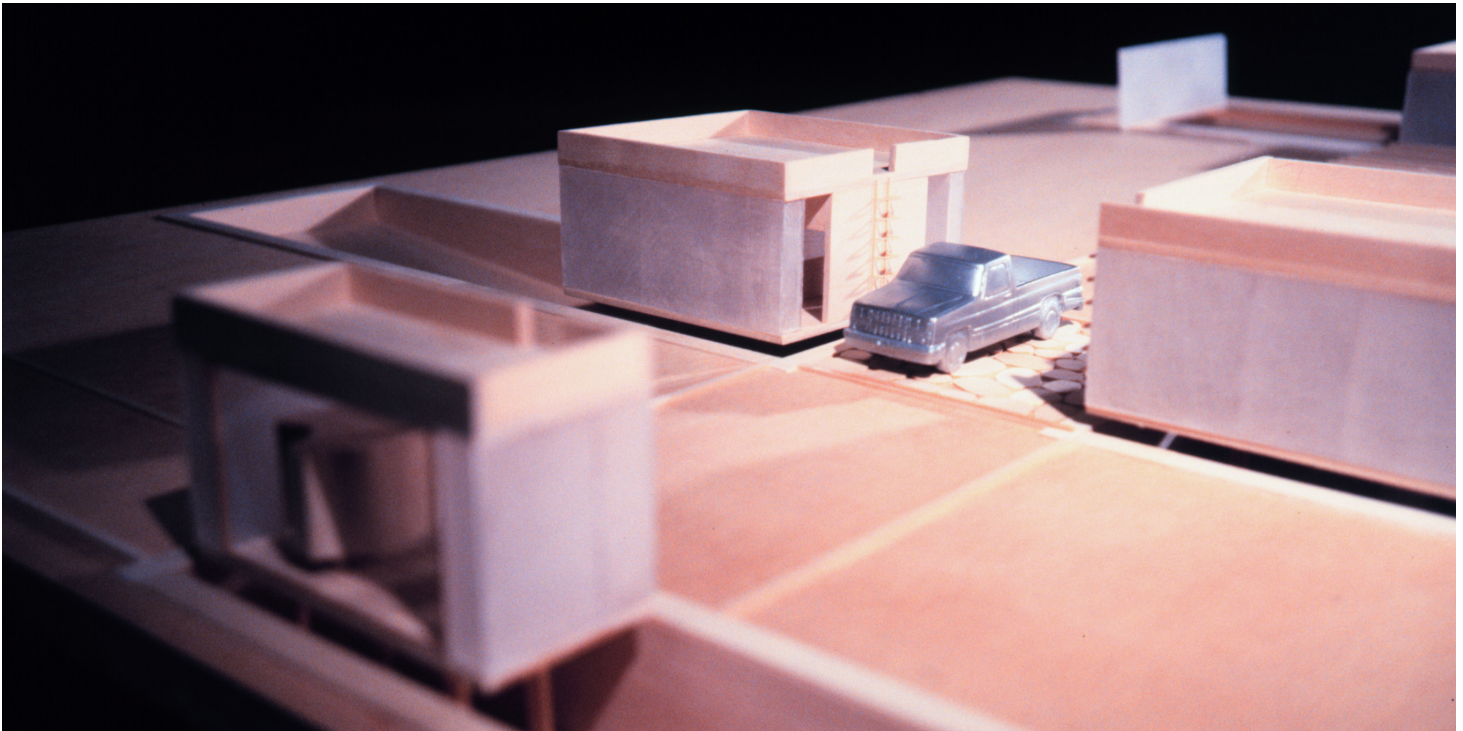


CAR AS CORE

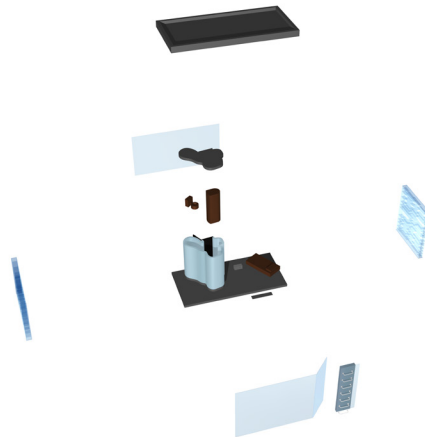


SITE PHOTO COLLAGE



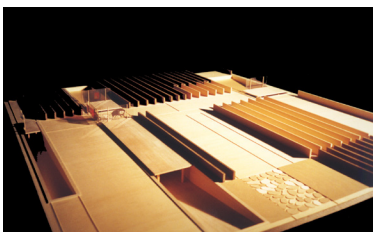


ARRAY OF LIVING PAVILIONS

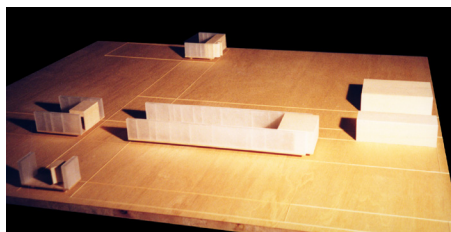


ELEMENTS: GUEST BATH

SURFACE + IMAGE



SERVICE + STORAGE



FRAMING

